

50/20

50/20

MUIRFIELD - PLAT NO. 3 OF PALM BEACH POLO AND COUNTRY CLUB WELLINGTON - P.U.D.

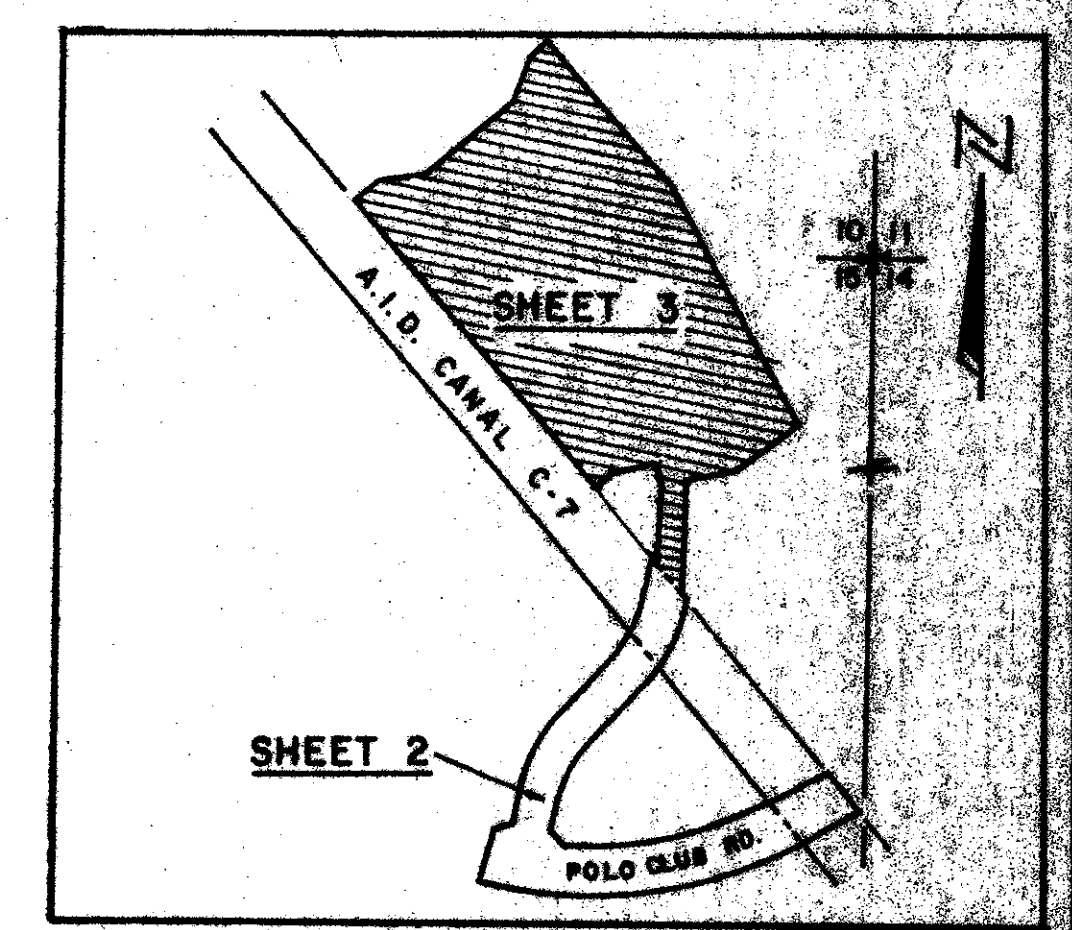
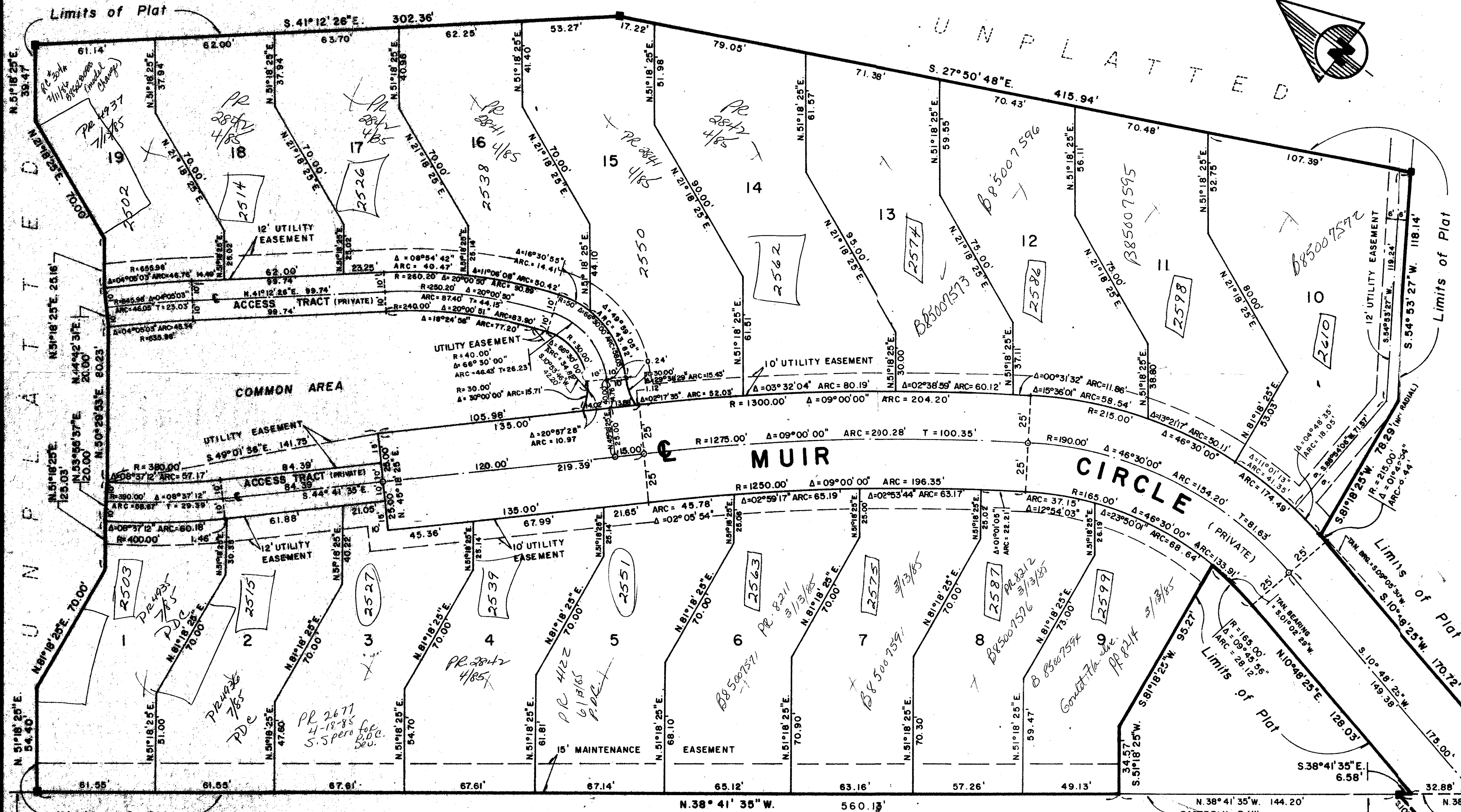
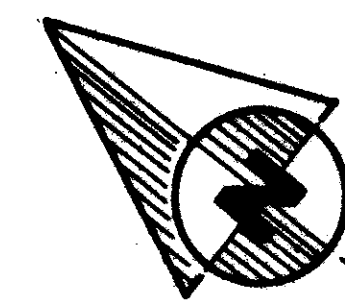
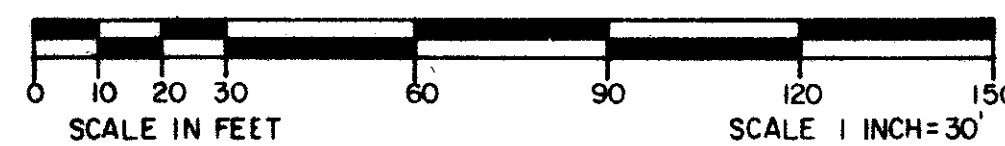
IN SECTION 15, TWP. 44 S., RGE. 41 E.

PALM BEACH COUNTY, FLORIDA.

DATE NOVEMBER 1984

SHEET 3 OF 3 SHEETS

UNPLATTED



PLAT SHEET INDEX MAP

SUBDIVISION	Muirfield
BOOK	50
PAGE	20
FLOOD ZONE	B
FLOOD MAP #	10
QUAD #	62
ZONING	AR
SE	NYA
ZIP CODE	33411
PUD NAME	WELLINGTON

- NOTES**
- ALL BEARINGS SHOWN HEREON ARE RELATIVE TO AN ASSUMED BEARING OF NORTH 01°02'05" EAST ALONG THE EAST LINE OF SECTION 15, TOWNSHIP 44 SOUTH, RANGE 41 EAST.
 - BUILDING SETBACK LINES SHALL BE AS REQUIRED BY PALM BEACH COUNTY ZONING REGULATIONS.
 - NO BUILDING OR ANY KIND OF CONSTRUCTION SHALL BE PLACED ON UTILITY AND MAINTENANCE EASEMENTS.
 - NO STRUCTURES, TREES OR SHRUBS SHALL BE PLACED IN THE UTILITY AND MAINTENANCE EASEMENTS.
 - APPROVAL OF LANDSCAPING ON UTILITY EASEMENTS SHALL BE ONLY WITH THE APPROVAL OF ALL UTILITIES OCCUPYING SAME.
 - WHERE DRAINAGE EASEMENTS AND UTILITY EASEMENTS CROSS, DRAINAGE EASEMENTS SHALL TAKE PRECEDENCE.
 - DENOTES PERMANENT REFERENCE MONUMENT
 - DENOTES PERMANENT CONTROL POINT
 - EASEMENTS ARE FOR PUBLIC UTILITIES, WATER AND SEWER, UNLESS OTHERWISE NOTED.

0332-043

50/20

MUIRFIELD #3
P.B. Polo & Country Club
Bailey, Fotopay, Inc.
land surveyors, planners, engineers

A.I.D. CANAL C-7
(O.R.B. 2501, PG. 1228)

UNPLATTED

DRAWING NUMBER

DRAWING NUMBER

DRAWING NUMBER

PLAN HOLD CORPORATION • IRVINE, CALIFORNIA
REGISTERED PROFESSIONAL LAND SURVEYOR